



Creating polypropylene,
shaping a better future

Benefit package

2023

PolyMirae Company Ltd.

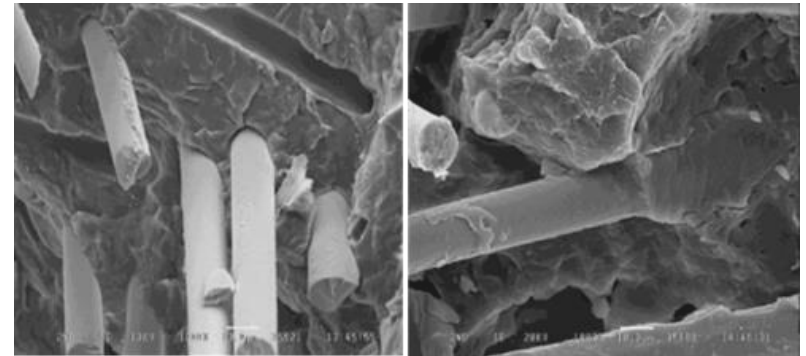
Glass fiber composite : GF/LFT/LWRT

Benefits

- High stiffness
- Very long-term heat resistance
- Easy processing
- High crystallization temperature
- High hardness

Typical applications

- Automotive & Appliance
- Consumers



Properties	Unit	Test method (ASTM)	<i>Adstif</i> HA5034	<i>Moplen</i> HP480S	<i>Adstif</i> HA848T	<i>Moplen</i> HP740T	<i>Adstif</i> HA5029	<i>Moplen</i> HP5035	<i>Moplen</i> HP5021
Melt index	g/10min	D1238	14	40	45	60	65	100	325
Tensile strength	kg/cm ²	D638	400	350	410	370	410	330	320
Flexural modulus	kg/cm ²	D790	22,000	15,000	21,000	18,000	22,000	14,000	13,500
Izod impact (Notched) 23°C	kg.cm/cm	D256	2	2	2	2	2	2	2
Rockwell hardness	R scale	D785	110	100	120	105	117	102	-
HDT 0.45MPa	°C	D648	135	110	135	125	140	110	110
Application	-	-	GF/GMT/LFT	GF/LFT	Flame retardant	LFT	GF/LFT	LWRT	LWRT

a) The above values are our lab data only for customer reference and should not be construed as product specifications. These values may shift slightly as additional data are accumulated

Thank you for your attention

Disclaimer :

Before using a PolyMirae product, customers and other users should make their own independent determination that the product is suitable for the intended use. They should also ensure that they can use the PolyMirae product safely and legally. This document does not constitute a warranty, express or implied, including a warranty of merchantability or fitness for a particular purpose. In addition, no immunity under PolyMirae's or third parties' intellectual property rights shall be implied from this document. No one is authorized to make any warranties, issue any immunities or assume any liabilities on behalf of PolyMirae except in a writing signed by an authorized PolyMirae employee. Unless otherwise agreed in writing, the exclusive remedy for all claims is replacement of the product or refund of the purchase price at PolyMirae's option, and in no event shall PolyMirae be liable for special, consequential, incidental, punitive or exemplary damages.

MOPLEN, HIFAX, ADSTIF, CLYRELL, PURELL, STRETCHENE, METOCENE, PRISTENE, HOSTALEN PP are trademarks owned or used by the LyondellBasell group companies and they are used by PolyMirae under license.